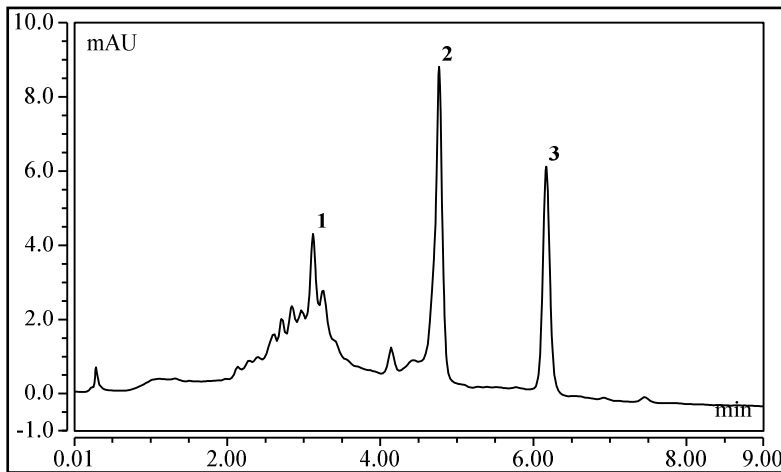


ProSwift™ WAX-1S
4.6 x 50 mm
Product No. 064294

Date: 21-Nov-22 22:43
Serial No. : 004470
Lot No. : 02211080

Eluent A: 10 mM Tris, pH 7.6
Eluent B: 1M Sodium Chloride in 10 mM Tris, pH 7.6
Gradient: 0% to 75% B in 9 minutes, Step 100% B, Hold 3 minutes.
Flow Rate: 2.0 mL/min
Temperature: 30 °C
Detection: UV 280 nm
Injection Volume: 10 µL
Storage Solution: 0.05M NaCl in 10 mM Tris, pH 7.6 + 0.1% Sodium Azide



No.	Peak Name	Ret.Time (min)	Asymmetry (EP)	Resolution (EP)	Peak Width (50%) (min)	Concentration
1	Ovalbumin	3.12	0.8	8.90	0.13	1.0
2	Trypsin Inhibitor	4.77	0.8	8.85	0.09	1.0
3	Insulin Chain A	6.17	1.1	n.a.	0.10	0.25

QA Results:

Component	Parameter	Specification	Results
	Pressure	<=660	478
Insulin Chain A	Asymmetry	0.95-1.7	Passed
Insulin Chain A	PW (50%)	<=0.13	Passed
Insulin Chain A	Ret. Time	5.68-6.23	Passed
T1/T2	Ret.Time Ratio	0.76-0.90	Passed

T1 = Ret.Time of Insulin Chain A minus Trypsin Inhibitor

T2 = Ret.Time of Trypsin Inhibitor minus Ovalbumin

Production Reference:

Datasource: MonoBio7
Directory: Production\MonoC\MonoC_2\064294_WAX-1S
Sequence: 064294_2022-11-080_KC
Sample No.: 65

Chromleon™ Thermo Fisher Scientific